



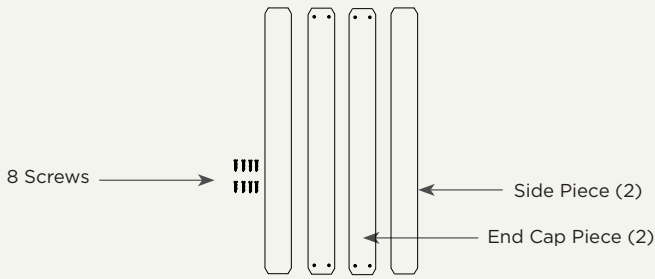
1-3/4" & 2-1/2" SURFACE MOUNT KIT

BEFORE INSTALLATION



• READ ALL INSTRUCTIONS BEFORE BEGINNING INSTALLATION!

Package Contents



- Packaging may differ depending on product ordered
- Lay parts on a clean, flat surface

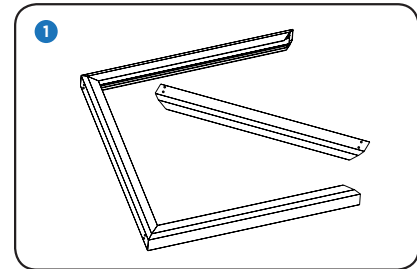
Tools Required

- Phillips screwdriver
- Drill

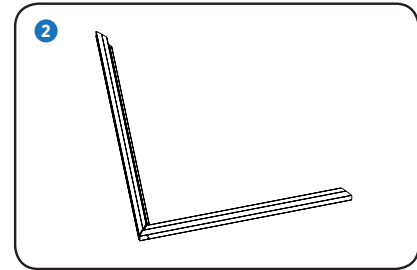
TILT® Components Sold Separately

- Panels
- Speed Whips
- Driver

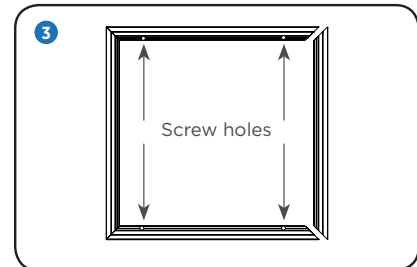
1 Attach one end cap to the two sides using four screws provided. Insert button plugs into the screw holes.



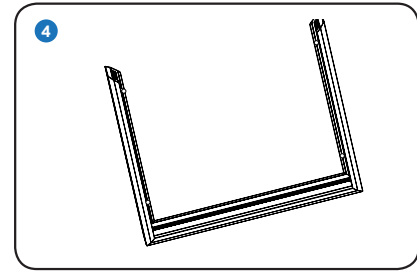
2 Loosely attach the other end cap. One screw in each side hole closest to the side flange.



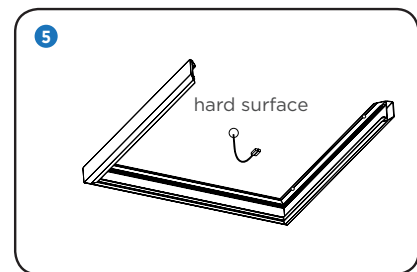
3 Drill mounting holes as needed in the side piece flanges. Do not drill into the loose end cap piece. Mount to ceiling.



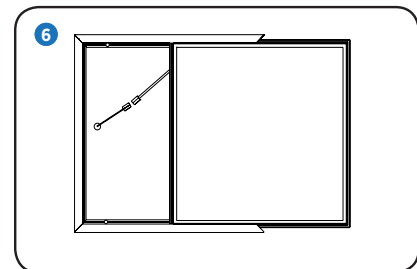
- 4 Remove loose end cap.



- 5 Drill a 1" hole into the ceiling or hard surface and bring the Speed Whip or Driver Whip through the hole. Drivers can be mounted directly behind the 2-1/2" frame (Step 5 won't be needed for this scenario).



- 6 Partially slide in the light panel and connect your light whip to the Speed Whip or Driver.



- 7 Fully slide in the light panel and test the fixture. Attach the end cap with the four screws left, then insert plugs.

