

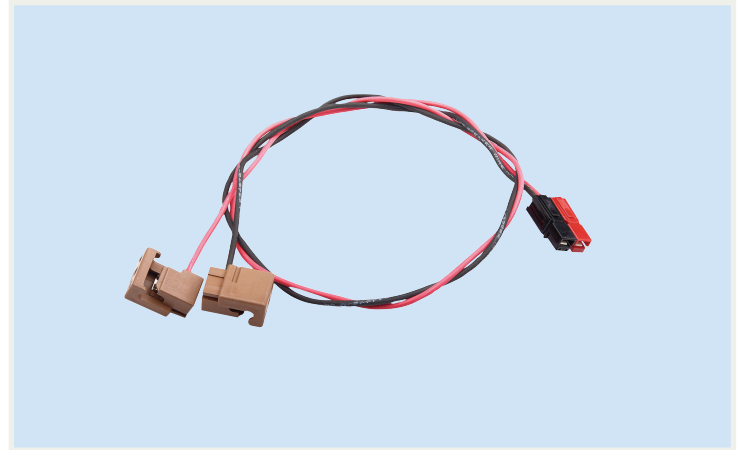


SPEED WHIPS

PROJECT	
TYPE	PART#

PRODUCT FEATURES

- Use to connect a TILT® Drive Line to a TILT® light
- Plug & Play 24 Volt design for quick install and design flexibility
- Allows multiple lights to be powered by one TILT® Driver and Drive Line
- Power Pole quick connect at one end and insulation displacement (splice) connector on other end
- Plenum rated
- CL3P cable
- Thin and flexible Class 2 (low voltage) cable allows easy navigation of crowded plenum space
- Available in various lengths, from 12” to 96”



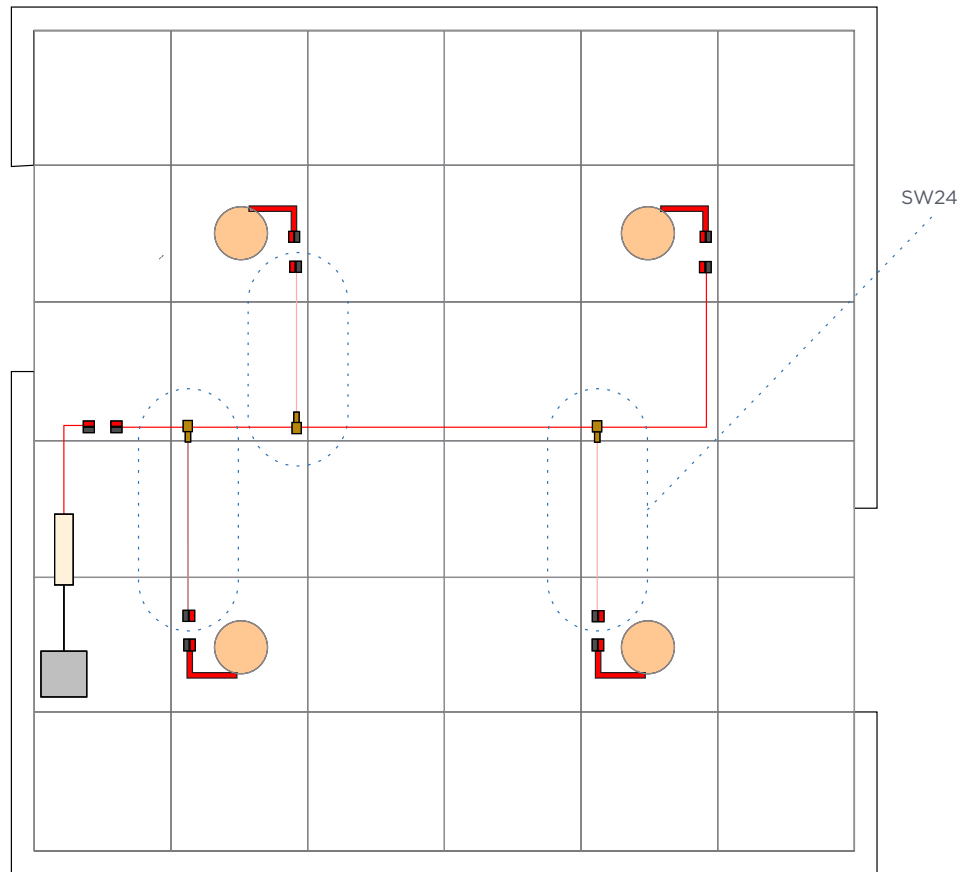
PART NUMBER & PRODUCT GUIDE (SPEED WHIPS)

Part#	Description
SW12	12 Inch Speed Whip
SW18	18 Inch Speed Whip
SW24	24 Inch Speed Whip
SW48	48 Inch Speed Whip
SW60	60 Inch Speed Whip
SW72	72 Inch Speed Whip
SW96	96 Inch Speed Whip

SAMPLE ROOM LAYOUT

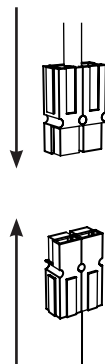
Speed Whips connected to a central Drive Line provide design flexibility and efficiency.

Many configurations are possible using the Speed Whip component.



ATTACHMENT TO DRIVE LINE DETAIL

Match black and red connections from both Speed Whips and Drive Lines and connect



One end of each Speed Whip is attached to the Drive Line, using pliers to connect the Red/Black Insulation Displacement Connectors to the corresponding Red and Black wires on the Drive Line. The other end of the Speed Whip is connected to the light panel using the Red/Black Connectors.

